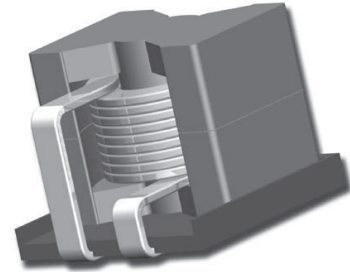


# PB2016 SERIES

## Power Cube

### Features

- High current inductor for automotive applications
- Nominal currents: up to 25 Amps
- Nominal inductance: from 1,5 $\mu$ H to 33 $\mu$ H
- Low profile with SMD format
- Low losses due rectangular wire is used
- Four soldering points to improve vibration test
- AECQ-200 qualified
- Rohs Compliance



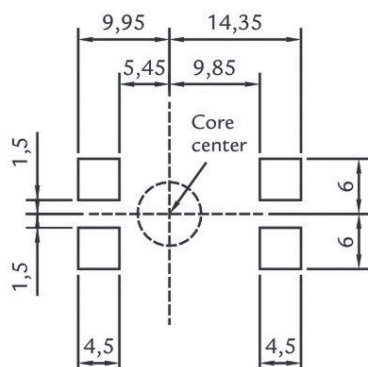
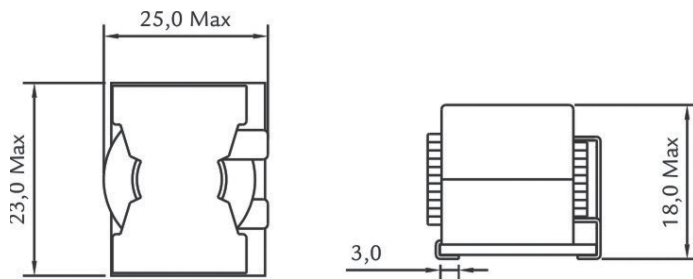
### Electrical specifications

Part Number	L ( $\mu$ H) $\pm 10\%$	I dc <sup>(1)</sup> (Amps)	I Sat <sup>(2)</sup> (Amps)	DCR (m $\Omega$ ) TYP.	S.R.F. (MHz) MIN.
PB2016-1R7	1,7	25	75	2,0	2
PB2016-2R2	2,2	25	60	2,0	2
PB2016-3R3	3,3	25	40	2,0	2
PB2016-4R7	4,7	16	35	4,5	2
PB2016-6R8	6,8	16	24	4,5	2
PB2016-9R2	9,2	16	16	4,5	2
PB2016-15R	15	16	10	4,5	2
PB2016-22R	22	16	7	4,5	2
PB2016-33R	33	16	4	4,5	2

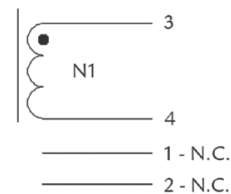
Note 1: Current with a 45 °C temperature rise from 25 °C ambient (natural cooling).

Note 2: Max DC current without the inductance drops from the value without DC current

### Dimensions



### Electrical Diagram



#### Notes:

- Coplanarity < 150 $\mu$ m
- Grid tolerance:  $\pm 0.2$
- Terminals 1 and 2 not connected to coil.  
Placed to improve vibration requirements.