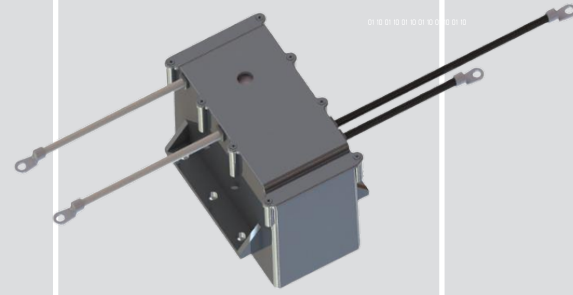


New

BCBM-7KW-001

DC-DC 7kW SET TRAFO + CHOKE 100kHz

INDUCTIVE COMPONENTS / OBC TRANSFORMERS



APPLICATIONS

- › Automotive EV/PHV AC/DC onboard battery chargers



01 FEATURES

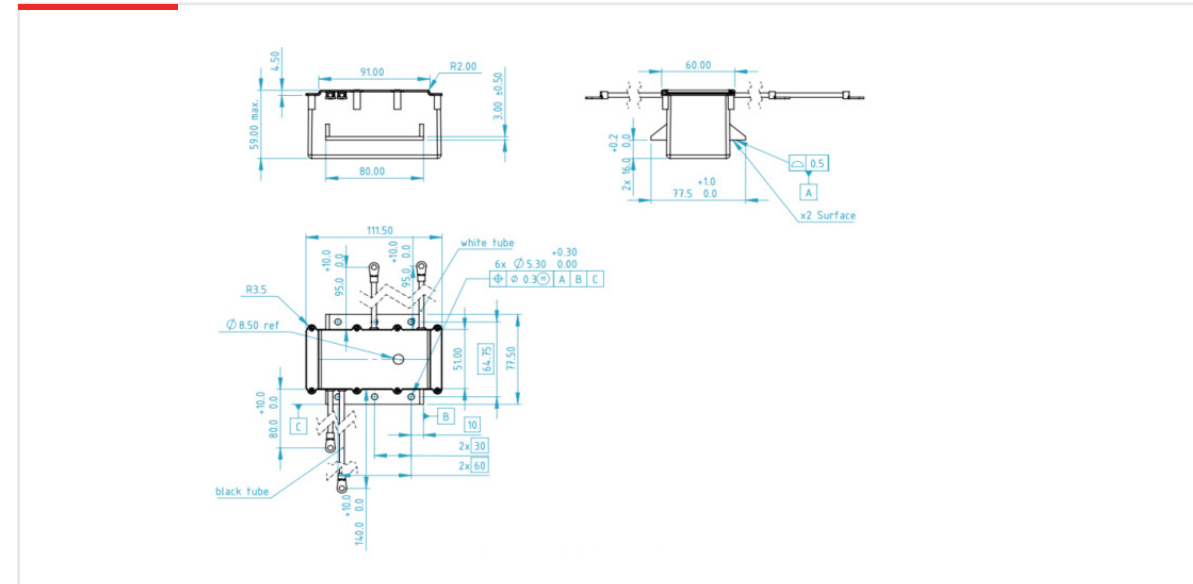
- › Dual active bridge Transformer 7.2kW
- › Operating Frequency up to 100kHz
- › Reinforced insulation between prim/sec and with core
- › UL94 and RoHS materials (F/155°C)
- › Design based on AEC-Q200
- › Weight: 1250 grams

02 OPERATION

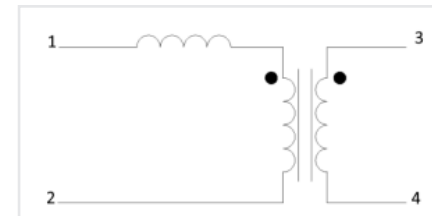
- › $V_{in} = 400V_{dc}$ / $V_{out} = 240-408V_{dc}$
- › $I_p = 39Arms$ MAX / $I_s = 45Arms$ MAX
- › Operating temperature $-30/+110^{\circ}C$ with cooling $45^{\circ}C$

03 SPECIFICATIONS

DIMENSIONS (mm)



ELECTRICAL DIAGRAM



ELECTRICAL SPECIFICATIONS

INDUCTANCE at 25°C

$L_1 = L_p$ (100kHz/1Vac)	353 μ H \pm 20%
$L_{kl} + L_r$ (100kHz/1Vac)	13.3 μ H \pm 20%
(3-4 shorted, meas 1-2)	

DC RESISTANCE at 25°C

R_p	11m Ω MAX
R_s	8m Ω MAX

TURN-RATIO

$N_p:N_s$	1.15
-----------	------

DIELECTRIC STRENGTH

{Primary+Choke}/{Secondary}	2.0kVac/50Hz/5mA/1min*
{Primary+Choke}/{BOX}	2.0kVac/50Hz/5mA/1min*
{Secondary}/{BOX}	2.0kVac/50Hz/5mA/1min*

(*) 1min in qualification / 2sec in mass production.