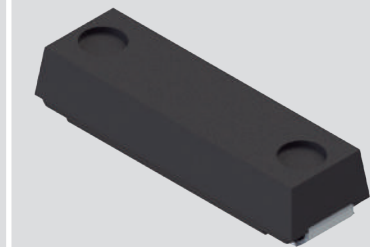


SDTR1103EM

SMD Transponder Coil

11.4x3.5x2.4mm

SINGLE AXIS TRANSPONDERS INDUCTORS



FEATURES

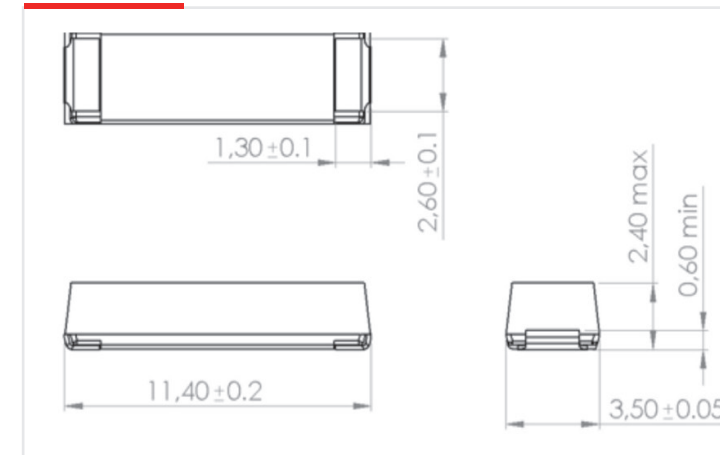
- › Single coil SMD molded
- › Allows Automatic Optical Inspection.
- › Improved sensitivity and Q factor.
- › Suitable for automotive Key Less Entry and TPMS applications.
- › The inductivity can be customized to achieve customer requirements.
- › AEC-Q200 qualified.

01 APPLICATIONS

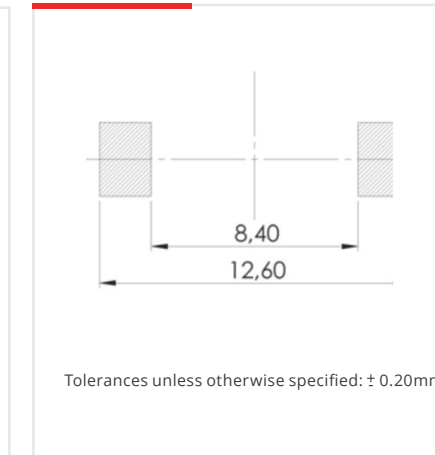
- › Immobilizers
- › Tyre Pressure Monitoring Systems (TPMS)
- › Keyless Entry Systems (KES)
- › Access control
- › Harsh environment industrial applications

02 SPECIFICATIONS

DIMENSIONS (mm)



RECOMMENDED PAD-LAYOUT



ELECTRICAL SPECIFICATIONS | SDTR1103EM-0720J

L (mH)	7.2
Q min	26
f(kHz)	125
SRF (kHz) Min	350
DRC (Ω) Max	95
Sensitivity (mVpp/App/m) min	68
Length (mm)	11.4
Width (mm)	3.5
Height (mm)	2.4

This chart is a reference guide for the most common required values at working frequency of 125 kHz. Any other inductance value at LF or tighter tolerances can be provided. Also can be supplied different inductance values in the different winding axis. Please contact our sales department for any inquiry.

Sensitivity measured with Helmholtz coils H=8.36 App/m @125 kHz. Contact us for measurement specification.

SRF: Self Resonant Frequency of the coil.