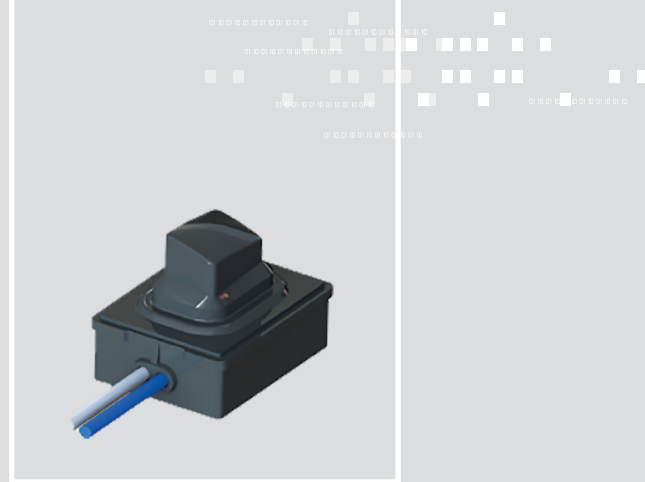


New

SWITCH PB-S1

Push button switch LF-RH-W

EMITTER ANTENNAS & SWITCHES / SWITCHES



FEATURES

Switches fully made with rubber compound, for interior usage on hidden lash door handlers.

Full rubber switch. Rigid housing with rubber encapsulation in full shape. Low stroke force and full waterproofness capability.

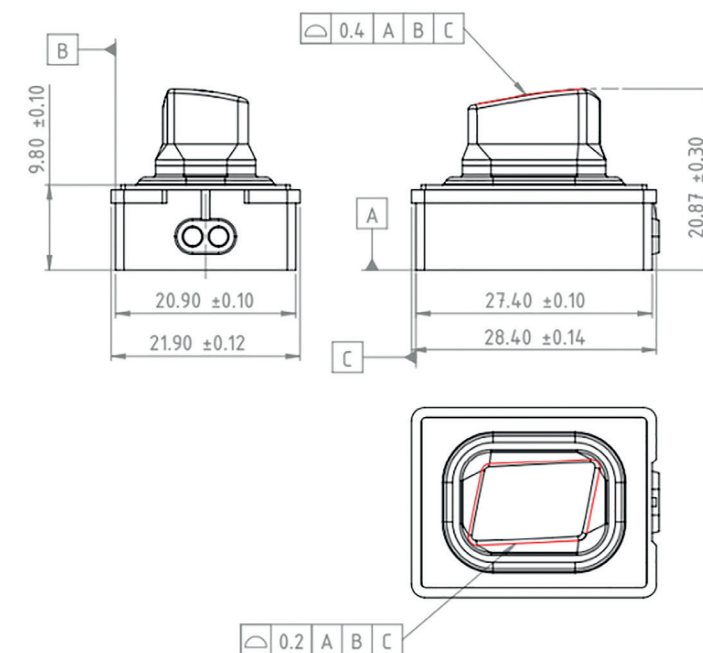
This product is served with 15cm cable, without terminal nor connector.

01 APPLICATIONS

- › Application for lock and unlock the car in combination with PKE (Passive keyless Entry System)
- › PEPS (Passive Entry/Passive Start) for a vehicle secure access.

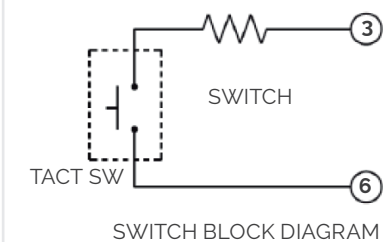
02 SPECIFICATIONS

DIMENSIONS (mm)



- › Effort of the smart key button must be $11.8 \pm 2.9\text{N}$ ($1.2 \pm 0.3\text{kgf}$) = F
- › Switch operating stroke: $0.8 \pm 0.3\text{ mm}$

ELECTRICAL DIAGRAM



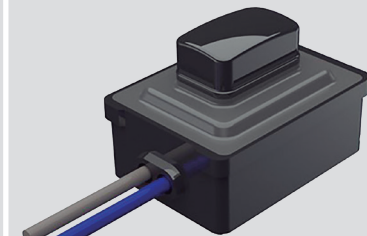
Rs	100 Ω Max
Resistance R off min	$10^6 \Omega$
Bounce time	< 5ms
Mechanical Life	> 100000 pushes
Power Supply	9V – 16V
Switching Current	Minimum 1mA Maximum 10mA

New

SWITCH PB-S2

Push button switch LF-RH-W

EMITTER ANTENNAS & SWITCHES / SWITCHES



FEATURES

Switches with integrated rigid button on top, developed for exposed external locations.

Rigid housing, rubber cushion and top button made on rigid plastic. Medium force rubber and stroke. Integrated tact microswitch with full waterproofness capability.

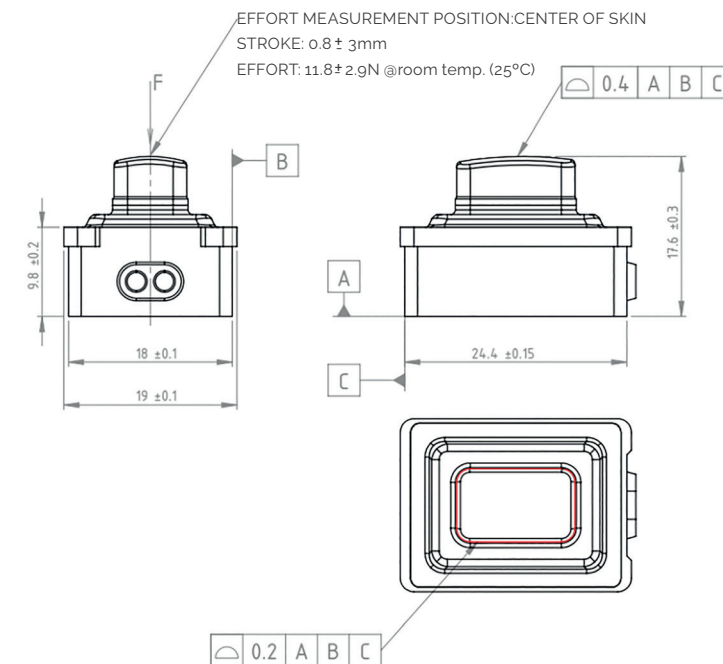
This product is served with 15cm cable, without terminal nor connector.

01 APPLICATIONS

- › Application for lock and unlock the car in combination with PKE (Passive keyless Entry System)
- › PEPS (Passive Entry/Passive Start) for a vehicle secure access.

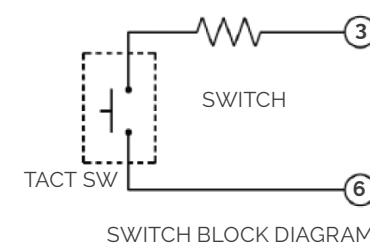
02 SPECIFICATIONS

DIMENSIONS (mm)



- › Effort of the smart key button must be 11.8±2.9N (1.2±0.3kgf) = F
- › Switch operating stroke: 0.8 +/- 0.3 mm
- › BUTTON texture/roughness on top according EMBO Type: 048F EMBO spec of MOLTEX.

ELECTRICAL DIAGRAM



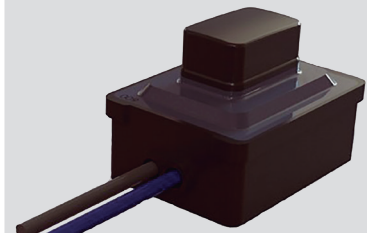
Rs	100 Ω Max
Resistance R off min	10 ⁶ Ω
Bounce time	<5ms
Mechanical Life	> 100000 pushes
Power Supply	9V – 16V
Switching Current	Minimum 1mA Maximum 10mA

New

SWITCH PB-S3

Push button switch LF-RH-W

EMITTER ANTENNAS & SWITCHES / SWITCHES



FEATURES

Switches with integrated rigid button on top, developed for exposed external locations.

Strong switch. Rigid housing, stronger rubber cushion and top button made on rigid plastic. Higher pushing force and smaller stroke. Integrated tact microswitch with full waterproofness capability.

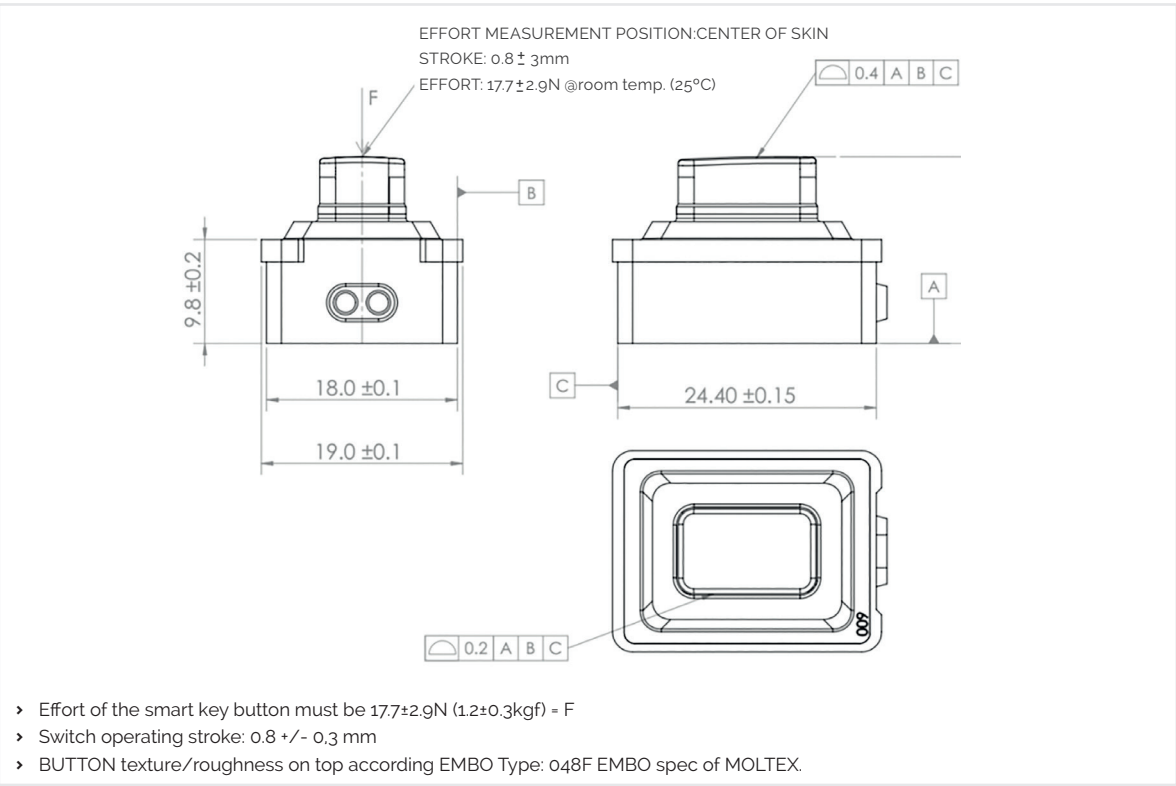
This product is served with 15cm cable, without terminal nor connector.

01 APPLICATIONS

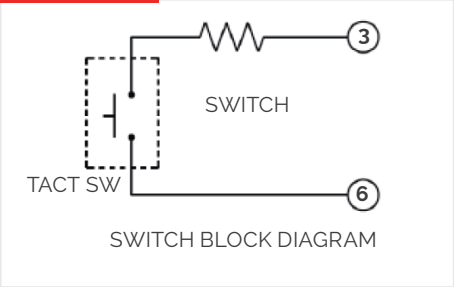
- › Application for lock and unlock the car in combination with PKE (Passive keyless Entry System)
- › PEPS (Passive Entry/Passive Start) for a vehicle secure access.

02 SPECIFICATIONS

DIMENSIONS (mm)



ELECTRICAL DIAGRAM



Rs	$30 \Omega \pm 10\%$
Resistance R off min	$10^6 \Omega$
Bounce time	<5ms
Mechanical Life	> 100000 pushes
Power Supply	9V – 16V
Switching Current	Minimum 1mA Maximum 10mA