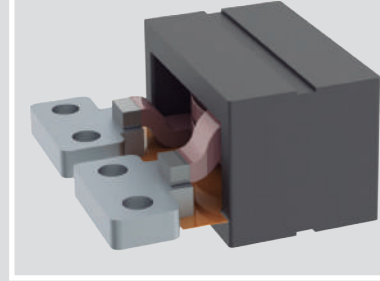


New

HPC1R0-180

High Power Planar Choke 1 μ H / 180Adc

INDUCTIVE COMPONENTS / HIGH CURRENT DC CHOKE



APPLICATIONS

- › Automotive HV/LV DCDC onboard converters

01 FEATURES

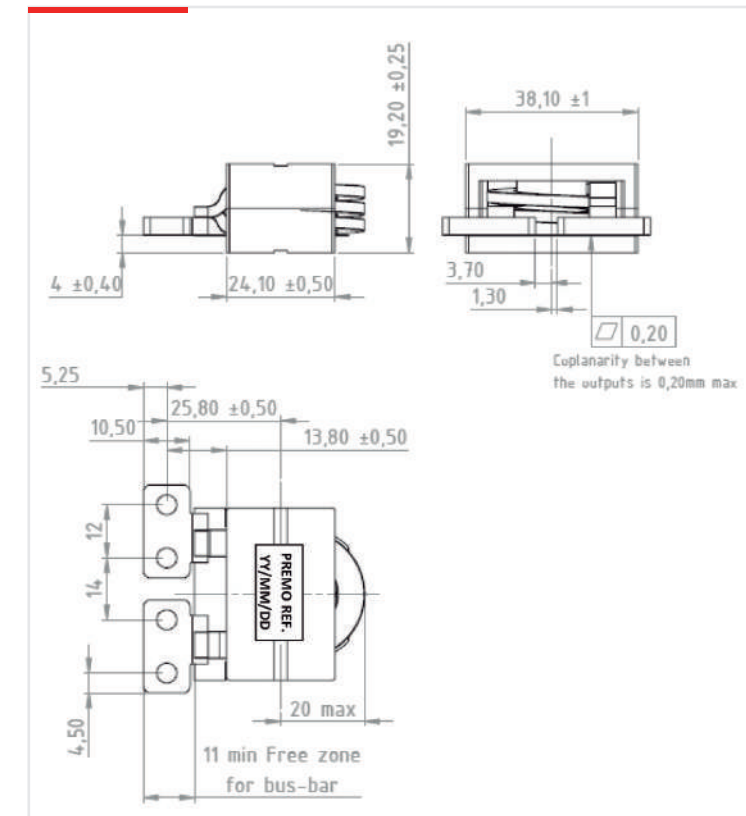
- › High power planar output filtering choke
- › UL94 and RoHS materials
- › AEC-Q200 qualified
- › Weight : approx 70grams

02 OPERATION

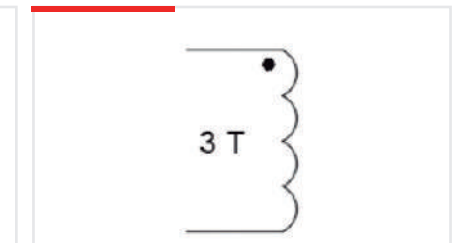
- › Output filtering choke 1 μ H 180Adc 200kHz
- › Inductance value at MAX current : Ldc > 0.9 μ H @200Adc
- › Copper losses: 15W @100°C (@180Adc)
- › Iron losses : negligible with MAX 35App ripple of current @200kHz
- › Operating temperature -40/+125°C
- › Mounting on cold plate @+75°C MAX

03 SPECIFICATIONS

DIMENSIONS



ELECTRICAL DIAGRAM



ELECTRICAL SPECIFICATIONS

INDUCTANCE at 25°C

L (100kHz/1Vac) | 1 μ H \pm 10%

DC RESISTANCE at 25°C

R | 0,35m Ω TYP
(0,45m Ω MAX)

DIELECTRIC STRENGTH

Between Winding/ | 500Vac
Core | (50Hz/3mA/1min)