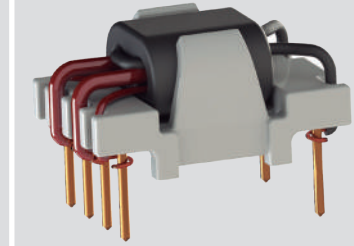


New

## PLC-001

2-30MHz 1:1:1 6μH

INDUCTIVE COMPONENTS / PLC TRANSFORMERS



### APPLICATIONS

- › Automotive EV/PHV AC/DC onboard battery chargers

### 01 FEATURES

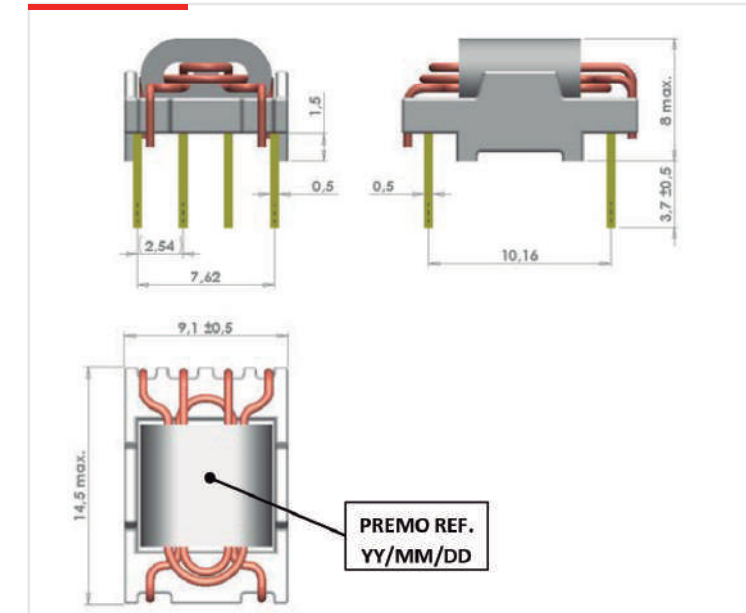
- › Signal transformer for HPGP (HomePlug Green PHY™) PLC modems
- › For power line communication devices acc. to IEC 15118 standard
- › For charging systems according to IEC 61851-1
- › PTH technology
- › Wide operating temperature range -40 to +125°C
- › UL94 and RoHS materials
- › AEC-Q200 qualified
- › Weight : approx 1gram

### 02 OPERATION

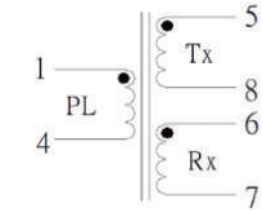
- › PLC signal transmission
- › OBC with communication with the charging station

### 03 SPECIFICATIONS

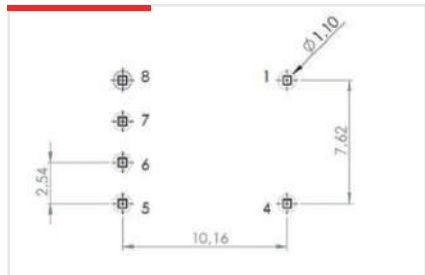
#### DIMENSIONS



#### ELECTRICAL DIAGRAM



#### RECOMMENDED PAD-LAYOUT



#### ELECTRICAL SPECIFICATIONS

<b>INDUCTANCE at 25°C</b>	
$L_{1-4} = L_{5-8} = L_{6-7}$ (100kHz/20mVac)	3.5μH < 5μH TYP < 6.5μH
<b>TURN-RATIO</b>	
$N_{1-4} : N_{5-8} : N_{6-7}$ (10kHz/1Vac)	1:1:1
<b>DC RESISTANCE at 25°C</b>	
$DCR_{1-4} = DCR_{5-8} = DCR_{6-7}$	25mΩ MAX
<b>DIELECTRIC STRENGTH</b>	
Between Windings	500Vac (50Hz/1mA/1min)

#### CURVES OF PERFORMANCES

